

## Teton County School District #401 is having an election on April 10, 2007 to vote on a supplemental levy of \$2,000,000.00.

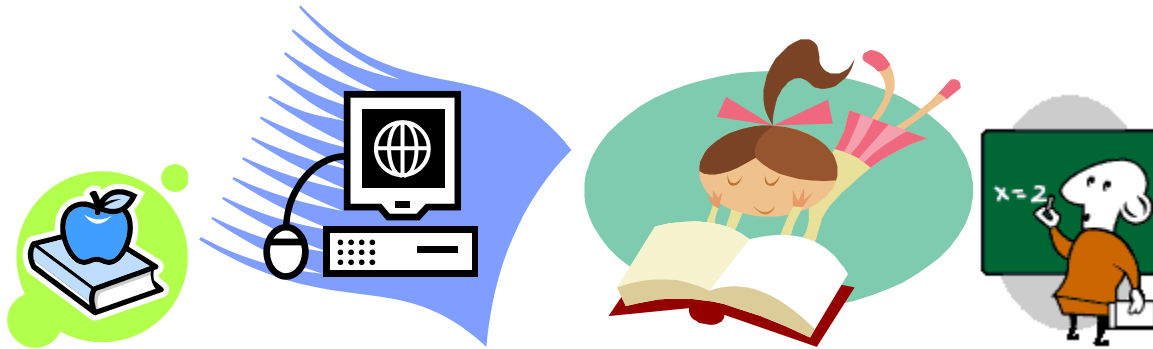
**Why?** The Idaho Legislature has not provided adequate funding for the past five years. Funding from the State of Idaho simply has not kept pace with the increasing cost of providing a quality education. Teton County School District cannot continue to provide education at the level that we all should expect without more funding. We must be able to pay salaries that keep pace at least with the cost of inflation. We have to be able to attract new employees as our current staff ages and retire. We must be able to purchase current textbooks. This past year we were not able to purchase new literature textbooks. We want to follow the state approved textbook adoption cycle. We must keep current in the technology available to both our students and staff. The majority of the computers available for students and staff are more than 8 years old. We simply cannot keep up with the need for up-to-date technology without additional funding. In order to comply with the current testing requirements it is necessary to have 30 up-to-date computers in a lab setting in each school. We need additional funding to be able to reduce class size especially in our elementary schools. These are just some of the reasons we are asking for a supplemental levy.

**What?** Teton County School District is asking for a supplemental levy of \$2,000,000.00. This is a decision that was made after much deliberation and thought. Supplemental levies can be for a period of two years and then must be renewed. A supplemental levy requires a simple majority to pass. The cost of a \$2,000,000.00 supplemental levy is: \$0.13 a month for each \$1,000.00 of assessed taxable value or \$1.56 a year for each \$1,000.00. A \$275,000.00 home which is the primary residence is eligible to receive a \$75,000.00 home owner's exemption; therefore the assessed taxable value is \$200,000.00. A \$200,000.00 taxable value home will cost \$26.07 a month for this levy.

**How will the money be spent?** The School Board has established the following priorities:

- Keep current with the purchase of new textbooks
- Augment salaries for all staff members
- Add staff to help reduce class size
- Upgrade current technology in classrooms and labs
- Upgrade our technology network
- Provide additional funds to finish the athletic field complex at the high school

Increased construction costs are the reason we need additional monies for the athletic field complex.



## **Where can I vote?**

Registered voters can vote at the following schools: Victor Elementary, Teton Middle School, Teton High School, and Tetonia Elementary. The polls will be open on Tuesday, April 10, 2007 from 8:00 a.m. until 8:00 p.m. If you are not a registered voter, you can register at the polls with a photo ID and proof of your physical address. You do not have to vote in a specific precinct. You can make arrangements to vote absentee ballot by calling the school district office at 354-2207.