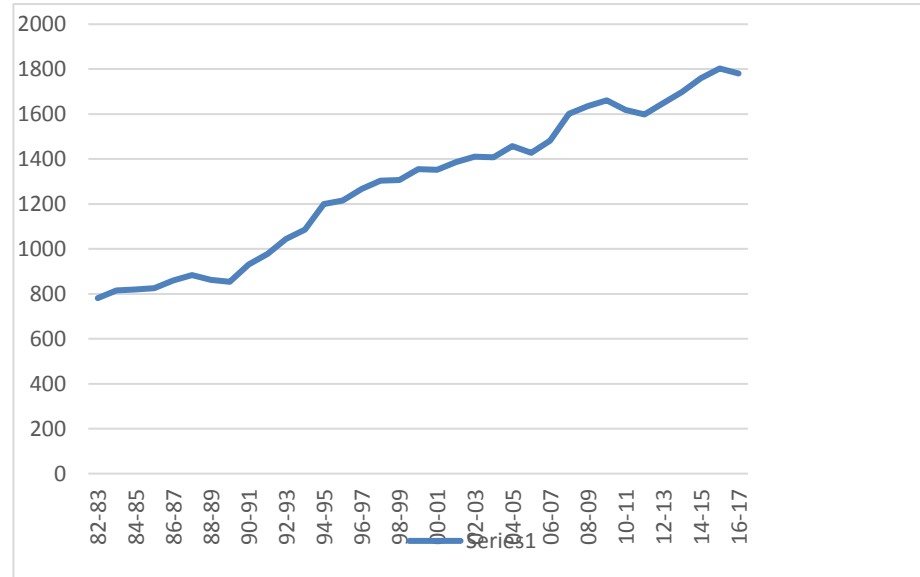


TSD 401 Enrollment review

Teton School District #401

Fall Enrollment

School Year	District Enrollment	+/- increase/decrease
82-83	781	
83-84	815	34
84-85	820	5
85-86	825	5
86-87	860	35
87-88	883	23
88-89	862	-21
89-90	854	-8
90-91	930	76
91-92	978	48
92-93	1044	66
93-94	1086	42
94-95	1200	114
95-96	1215	15
96-97	1266	51
97-98	1304	38
98-99	1307	3
99-00	1355	48
00-01	1352	-3
01-02	1386	34
02-03	1411	25
03-04	1407	-4
04-05	1458	51
05-06	1427	-31
06-07	1482	55
07-08	1601	119
08-09	1635	34
09-10	1661	26
10-11	1618	-43
11-12	1599	-19
12-13	1648	49
13-14	1698	50
14-15	1759	61
15-16	1803	44
16-17	1781	-22

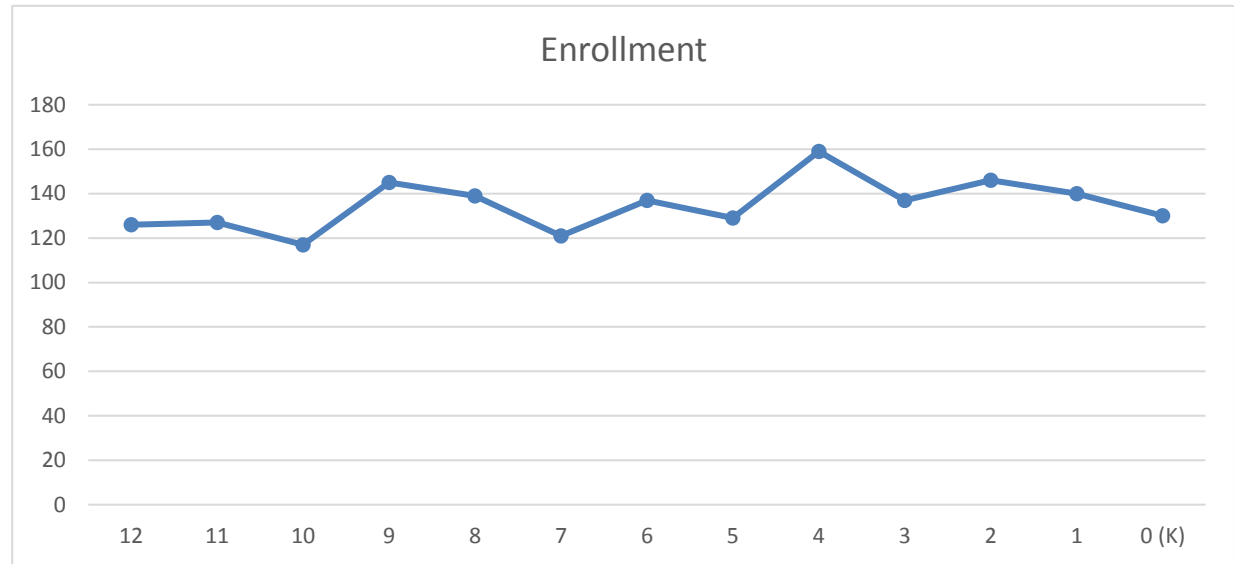


- # drop in enrollment
- # increase in enrollment
- # increase 2+ classroom units

TSD 401 Enrollment review

avg. growth/yr: 82-15		29
avg. growth/yr: 05-15		27

<u>Grade</u>	<u>Enrollment</u>
12	126
11	127
10	117
9	145
8	139
7	121
6	137
5	129
4	159
3	137
2	146
1	140
0 (K)	130
Pre	9
Basin	19
District	1781



TSD 401 Enrollment review

Sept. 8, 2015

TSD 401 Enrollment review

Sept. 8, 2015